

# R.J. MATTHEWS

## Haulage

# DIXIES CHALLENGE

SUNDAY 30TH APRIL 2023



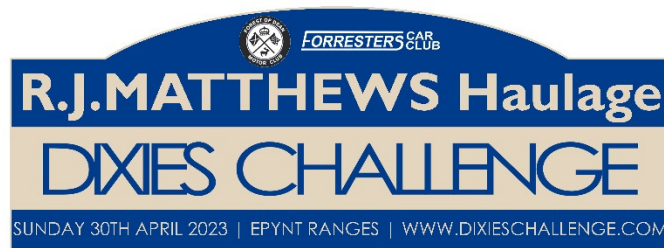
FORRESTER'S CAR CLUB

# FINAL INSTRUCTIONS



[www.dixieschallenge.com](http://www.dixieschallenge.com)





# FINAL INSTRUCTIONS

**Start No:** See Entry List

**Your Time at MTC1:** See Noticeboard

Thank you for your entry for the 2023 Dixies Challenge. Please read through these instructions thoroughly. You are reminded that this document carries the same force as the Supplementary Regulations. If you have any queries, do not hesitate to contact the organising team.

If for any reason, you find yourself unable to attend the event, please let us know ASAP as we have a reserve list who would gladly take your entry.

Your ACTUAL due time at MTC/ATC 1 will be found on the Start Time List on the Official Notice Board, available Saturday evening.

The noticeboard will be on the Sportity app, available at the App Store and on Google Play.

Documentation and signing on is being done online. If you have not completed this already, please do so as soon as possible.

**Emergency Contacts Numbers:**

Richard Lomax [Event Secretary]

07740 457084 (Saturday 29<sup>th</sup> 09:00-21:00, Sunday 30<sup>th</sup> from 07:00hrs)

Ade Williams [Entries Secretary]

07768 522992 (Saturday 29<sup>th</sup> 12:00-21:00, Sunday 30<sup>th</sup> from 07:00hrs)

## 1 AMENDMENTS TO REGULATIONS

### Article 4 – Programme

**Change:** Scrutineering will now be 29/4/23: 14:00hrs – 18:00hrs and 30/4/23 (by pre-agreement with the Entries Secretary and payment of premium) 07:30-08:30hrs

**Change:** First car will now start at 09:30hrs.

### Article 7 – Event Format

**Change:** First car will now start at 09:30hrs.

### Article 21.1 - Officials

**Delete:** Assistant Clerk of the Course: Will Rogers

**Change:** Competitor Liaison Officer is now Simon Gronow

## 2 IMPORTANT REMINDERS

We kindly remind you that:

- Landmarc have notified us that the Defence Training Estate is tobacco free from 1 January 2023. Whilst the national guidance allowed for use of a vaping designated area, we have been informed that Epynt does not have one. As a result, smoking and vaping is prohibited on the entire venue. Penalty for non-compliance is outlined in the Supplementary Regulations Article 16.12.
- The use of Motor Homes, trailers and service vehicles larger than a long wheelbase van must be discussed with the Entries Secretary.
- Only one service vehicle can enter the service area in addition to the competing vehicle due to space limitations. Please leave additional cars in the trailer park or Dixies Car Park. Please do not park on the through road through services as this must be always kept clear.
- Competitors must supply an environmental ground sheet, which must be placed under the competing vehicle during any service activities.
- You should ensure that all documentation (V5, MoT, competition licenses, clubcards etc) are brought to the event and available for inspection if required. All vehicles must be taxed, insured and have a logbook or passport.
- All competing crews must attend a compulsory Drivers Briefing which will be held outside Rally HQ at 09:00hrs on Sunday 30<sup>th</sup> April 2023.
- If you happen to breakdown, please stay with your vehicle. We will endeavour to retrieve both you and your vehicle as soon as practicable. We would strongly suggest that you carry drinking water and a coat in your car. Do not enter any building within the Training Area, or climb any fences, buildings or bank; take care where you stand, the ground can be uneven.
- Alcohol consumption/possession within the venue is prohibited by the MOD Licence.
- The 'Warming of brakes' and the 'warming of tyres' within the confines of the service area is prohibited. Penalty as per event regulations.
- JD Tyres will be attending the event. Please contact them on 07968 020545 or 07966 466548 if you have any specific requirements.

### 3 SCRUTINEERING AND PAPERWORK COLLECTION

Scrutineering for all competitors, unless the Sunday premium was selected on your entry form, will take place on Saturday 29<sup>th</sup> April from 14:00-18:00 at Fedr Equestrian Centre, Llywel. LD3 8RG. See the enclosed map for more details. **You must not take your trailer to scrutineering**, and instead unload in the trailer park 1.4 miles onto the ranges – What3Words:

///resonates.horizons.apparatus). Marshals will be controlling access to the scrutineering venue so please follow their instructions.

You will be provided with your decals and numbers at Noise – please ensure they are fitted before presenting your car at scrutineering. After scrutineering, take your process card to the paperwork collection point at the same venue to collect your necessary paperwork including your Roadbook. There will be an on-site café which we would encourage you to use for refreshments.

For competitor numbers listed below who have arranged to scrutineer on Sunday morning between 07:30-08:30, this will take place near Dixies Corner at the top of the Steps. What3Words: ///cave.against.awestruck. You will be provided with your decals and numbers at Noise – please ensure they are fitted before presenting your car at scrutineering. After scrutineering, take your process card to the paperwork collection point which will be in Rally HQ in the service area to collect your necessary paperwork including your Roadbook.

Car No	Day	Car No	Day	Car No	Day	Car No	Day
1	Saturday	21	Saturday	41	Saturday	61	Saturday
2	Saturday	22	Saturday	42	Saturday	62	Saturday
3	Saturday	23	Saturday	43	Saturday	63	Saturday
4	Saturday	24	Saturday	44	Saturday	64	Saturday
5	Saturday	25	Saturday	45	Saturday	65	Saturday
6	Sunday	26	Saturday	46	Saturday	66	Saturday
7	Saturday	27	Saturday	47	Saturday	67	Saturday
8	Saturday	28	Saturday	48	Sunday	68	Saturday
9	Saturday	29	Saturday	49	Saturday	69	Saturday
10	Sunday	30	Saturday	50	Saturday	70	Saturday
11	Saturday	31	Saturday	51	Saturday	71	Saturday
12	Saturday	32	Saturday	52	Saturday	72	Sunday
13	Saturday	33	Sunday	53	Saturday	73	Saturday
14	Saturday	34	Saturday	54	Saturday	74	Sunday
15	Saturday	35	Sunday	55	Sunday	75	Saturday
16	Saturday	36	Sunday	56	Saturday	76	Sunday
17	Sunday	37	Saturday	57	Saturday	77	Saturday
18	Saturday	38	Saturday	58	Saturday	78	Saturday
19	Saturday	39	Saturday	59	Saturday	79	Saturday
20	Saturday	40	Saturday	60	Saturday	80	Saturday

#### 4 ENTRANCE TO THE VENUE, TRAILER PARK AND SERVICING

The trailer park will be signposted and is in the gravel car parks on the left hand side of the road (travelling Northbound) approximately 1.5 miles from the top of the dual carriageway at Llywel. Neither the event organisers nor the MOD will accept responsibility for trailers left in the trailer park.

Any additional vehicles must also be left here (or at Dixies Corner) and should not be brought to the service area.

The MoD have asked us to ensure that there is no camping on the Ranges, and hence you must not access the ranges until Sunday Morning from 4am.

There are three sections within the service area, all on the left hand side of the road as you travel Northbound from the Trailer Park (approximately 4.7 miles along the road). Please do not use the section on the right, over the cattle grids, at the request of the MOD.

There will not be a huge amount of room in the service area, so please park sensibly and considerately for your fellow competitors and do not bring extra vehicles.

#### 5 A REMINDER FROM OUR SCRUTINEER

All vehicles must comply with the stage rally regulations in section R of the 2023 Motorsport UK Yearbook. In particular, we draw your attention to the following changed regulations:

- K3.1.1 - Where a plumbed-in fire extinguisher system is required the vehicle must be equipped with an extinguishing system in compliance with FIA Standard for plumbed-in Fire Extinguisher Systems in Competition Cars (1999) or with FIA Standard 8865-2015. The system must be used in accordance with the manufacturer's instructions and with FIA Technical Lists n°16 or n°52. **In rallies, the minimum quantity of extinguishant for systems of FIA Technical List n°16 must be 3 kg.**
- K3.2.1 to 3.2.3 - Where a hand-held fire extinguisher is required the vehicle must be equipped with at least one fire extinguisher in compliance with 3.2.2 to 3.2.7 hereunder or with FIA Standard 8865-2015 (Articles 3.2.2 to 3.2.5 hereunder do not apply in the latter case)...  
Minimum quantity of extinguishant:
  - **AFFF foam** (includes: FireSense, Zero 2000, F-TEC etc) **2.4 litres**
  - **Gas** (includes: Novec 1230, FX G-TEC/N-TEC, Viro3, Zero 360, Extreme etc) **2.0 kg**
  - **Powder 2.0 kg**
- R25.3.2 - The crew must also wear flame resistant overalls homologated to FIA 8856-2000, FIA 8856-2018 or FIA 1986 Standard, **and balaclavas to FIA 8856-2000 or FIA 8856-2018 Standard**. Competitors are also strongly advised to wear Flame Resistant gloves, socks, and underwear. Plastic shoes (such as trainers) should be avoided. Attention is drawn to (K.9.1.5 to K.9.3).

If you have any queries, please contact Paul Loveridge on 07831 656472.

## 6 EVENT FORMAT

The format of the event is detailed in your roadbook. Stages 3 & 4 are a repeat of Stages 1 & 2 and Stages 7 & 8 are a repeat of Stages 5 & 6.

At all times, if queueing for a stage, please park on the left hand side and leave room for access. Please do everything you can to ensure the middle road remains unobstructed and that any public using this road are not inconvenienced. This is particularly important for SS9.

The Competitor Liaison Officer will be based at or around the service in control and service area all day and should be your first point of call for all queries.

## 7 ORGANISERS ADVICE

No water or fuel is available on site - you should bring enough for you and your vehicle for the day.

Please treat the chicanes with respect to avoid damaging them, your vehicle and putting marshals at danger.

## 8 RESULTS AND AWARDS

You can view live timing results using this link <https://rallylivetiming.info/livetiming/event/1001192>. Awards will be presented in person, outside of Rally HQ, as soon as possible after the event.

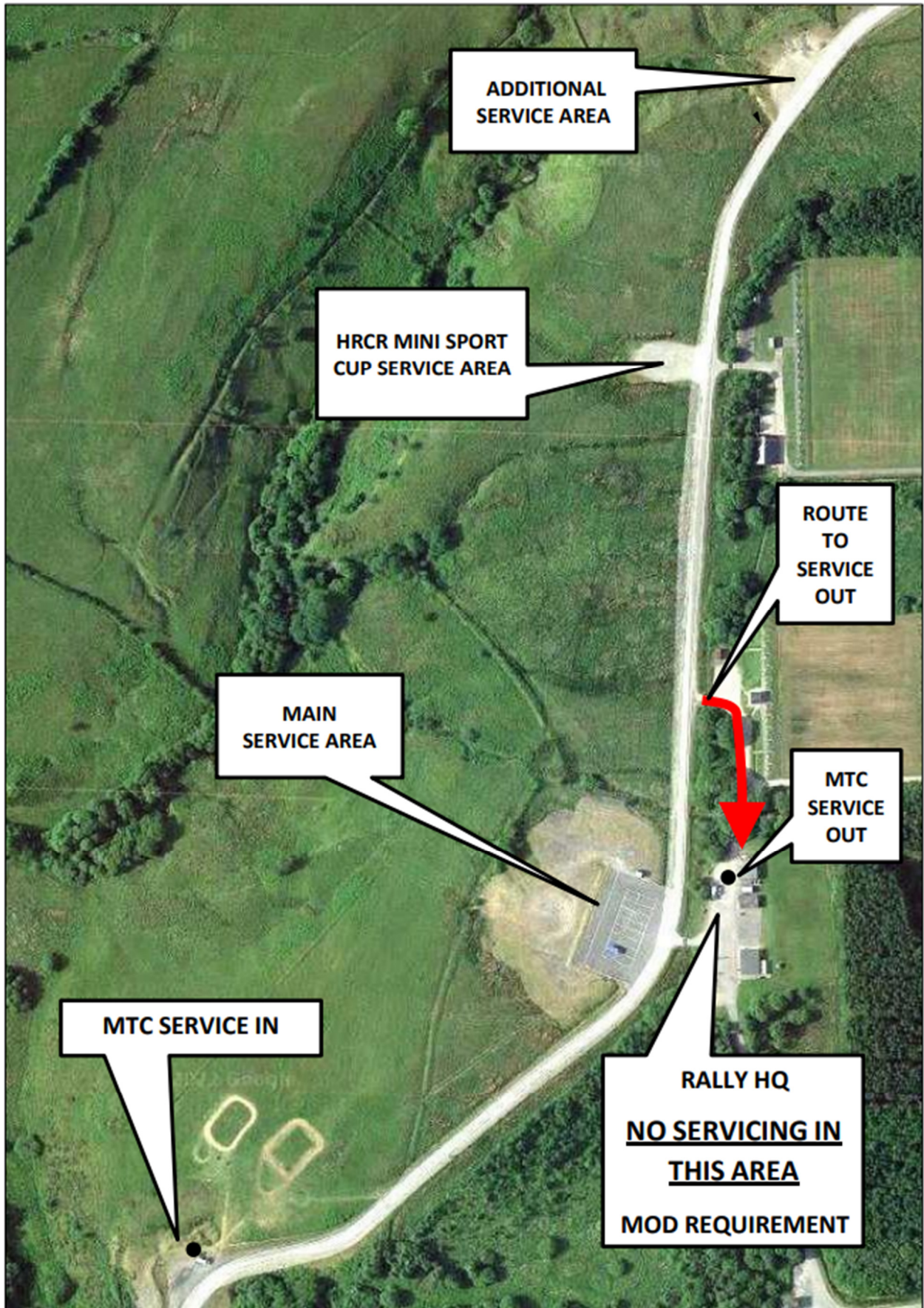
We thank you again for your entry, and welcome you back to Epynt. If you have any constructive feedback before, during or after the event, we would very much like to hear it to see what we can improve next year.

See you at the weekend,

Neil Fuller, Clerk of the Course  
*23<sup>rd</sup> April 2023*

SERVICE AREA – J RANGE

WHAT 3 WORDS LOCATION: ///maybe.goat.dissolves

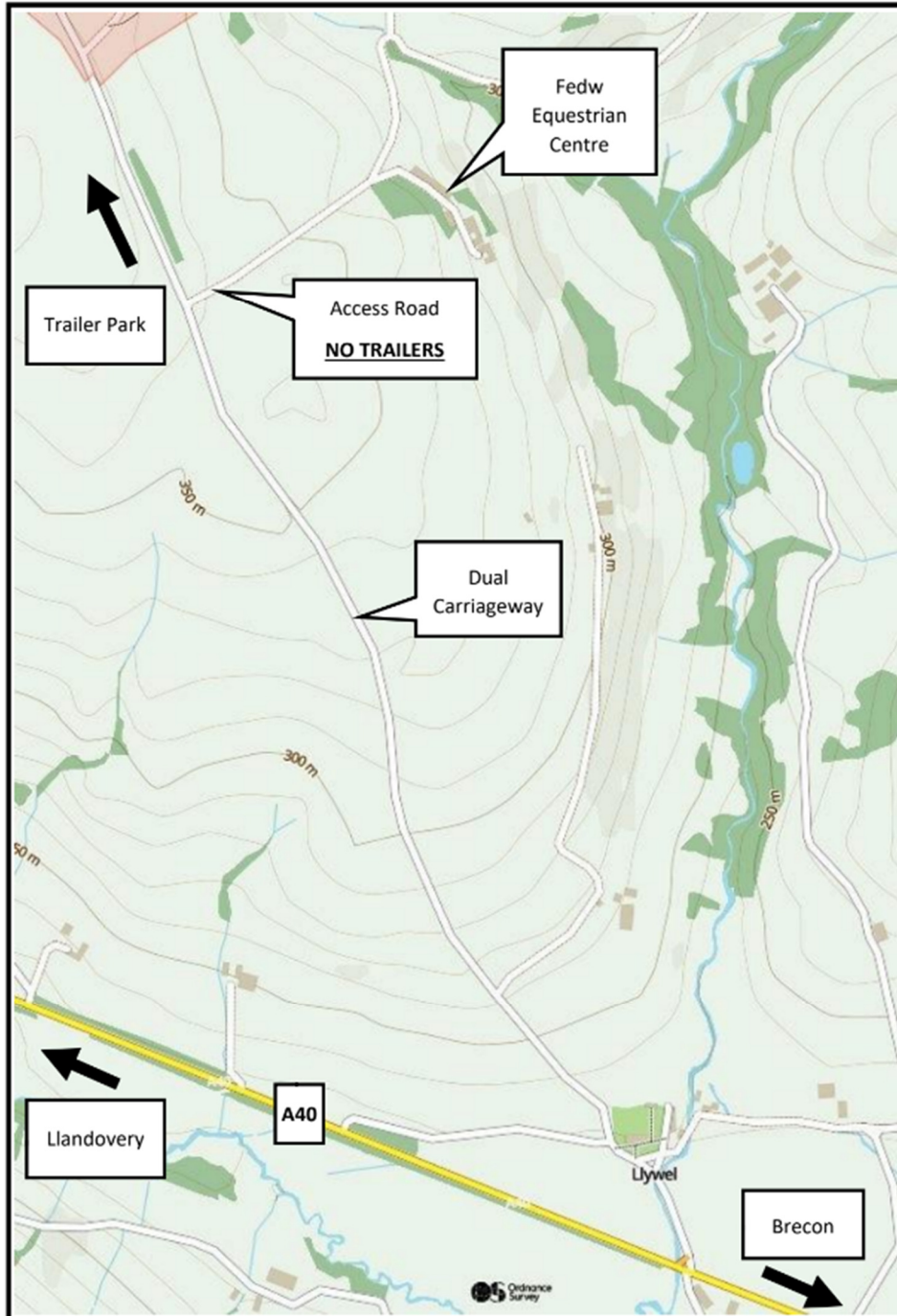


## SCRUTINEERING & NOISE TEST

### SATURDAY ONLY

This will take place at **FEDW EQUESTRIAN CENTRE** (W3W: [:///ulterior.about.liked](#)) on the dual carriageway leading up from the A40, on the right, towards the Epynt Ranges.

**IMPORTANT: YOU MUST NOT TAKE YOUR TRAILER TO SCRUTINEERING. YOU MUST UNLOAD YOUR CAR IN THE TRAILER PARK (W3W: [:///resonates.horizons.apparatus](#)), WHICH IS LOCATED ABOUT 1.4 MILES FURTHER TOWARDS THE RANGES. THEN DRIVE YOUR CAR BACK TO SCRUTINEERING. ACCESS IS NARROW TO FEDW EQUESTRIAN CENTRE AND WILL BE CONTROLLED BY MARSHALS. IF YOU ATTEMPT TO TAKE YOUR TRAILER TO SCRUTINEERING YOU WILL BE STOPPED.**





## SERVICE AREA GUIDELINES

When participating in motor sport events and carrying out activities at Service Areas, entrants, competitors and service crew members should be aware of their own and other people's safety and wellbeing. The Organisers have allocated a service area of adequate size for the maximum number of entrants and taken all reasonable precautions to ensure these zones are suitable for anticipated service activities and the needs for entrants, competitors and service crew members.

### A. GENERAL GUIDANCE

1. The service area zones provided offer relatively even ground, avoid setting up on uneven ground.
2. The Organisers have set a speed limited for the Service Area of 10mph, please adhere to this.
3. Ensure an environmental ground-sheet is in place before work commences.
4. If you erect awnings, pop-up tents or gazebos, please ensure they are securely constructed with sufficient ballast or anchorage to cope with wind conditions. If the Organisers deem any structures to be unsafe, you will be required to rectify or remove the structure.
5. Service vehicles should have an environmental spill-kit available and ready for use.
6. Fire extinguishers should be readily available at all time, particularly when welding, grinding or handling fuel or any part of the fuel system. The Organisers have provided fire extinguishers for use as necessary at the top of the service area at the black gate near results.
7. Please ensure you do not block for emergency vehicles at any time.
8. Vehicles should be supported by axle stands, chassis sill stands or ramps, all with recommended base plates, when raised in the air by trolley or any other types of jack. Engines should not be running when the vehicle is raised on stands. No other work on the car should be attempted, when raising or lowering of the car is taking place.
9. Where necessary, as part of the service i.e. changing of fuel tank, fuel pump, fuel filter, or any other item of fuel circuit, emptying and/or refilling of the fuel tank is permitted provided that:
  - a. The work is carried out with the knowledge of the organiser
  - b. A fire extinguisher with operator is on standby
  - c. No other work is carried out on the car during this operation
  - d. A safety zone is established within which all sources of ignition are removed
  - e. A minimum amount of fuel is used and any removed fuel is stored in a sealed container
10. Any personnel carrying out work should ensure that they adopt safe working practices at all times. Entrants/Competitors are responsible for all personnel in their team and in particular for supervising any young persons under the age of 18.
11. Trailing cables & hoses should not be allowed to create a trip hazard and should not be run across access or roadways unless covered by cable protectors
12. Whenever vehicle engines are being run, adequate ventilation must be in place.

### B. STORAGE & USE OF PETROLEUM SPIRIT

1. Re-fuelling should be the last operation to be carried out before the vehicles leave. The vehicle should be off any support stands, have all four wheels on the ground, have all other work ceased and have no occupants, when refuelling commences. All sources of ignition must be removed from the area and an appropriate fire response should be prepared.
2. Ideally re-fuelling should be by hand pumping, rather than from hand held containers
3. Containers should comply with the relevant British Standard, should be marked "Petroleum Spirit-Highly Flammable" and be kept from any source of ignition.
4. Petrol is to be used as fuel only, not for any other purpose.
5. All vehicle re-fuelling is to take place in the open air. Smoking and any other sources of ignition, including live electrical items, must be prohibited and a safe area should be enforced with an operative on standby with a fire extinguisher.
6. Refuelling operatives, including those standing by with fire extinguishers, should ensure they are wearing

protective clothing, including gloves and eye protection.

**C. HAZARDOUS SUBSTANCES**

1. Some parts on historic vehicles, for example brake & clutch linings, contain asbestos. Competitors are encouraged to use non-asbestos substitutes where possible.
2. Where asbestos is used, every effort should be made to prevent dust being released.
3. Some mineral oils may cause skin cancers. Where contact does occur, contamination should be washed off immediately. The wearing of any contaminated clothing should be avoided.
4. Other substances may cause ill health. Competitors should obtain MSDS (material safety data sheets) from suppliers in advance so that they hold important safety information about the products

**D. ELECTRICAL SAFETY**

1. All electrical equipment should be maintained in a safe condition.
2. Extension leads & cables should be neoprene, oil resistant flexible cable.
3. All electrical equipment used externally should be weatherproof and tools should be insulated against electric shock and used with residual current devices.
4. Electrical equipment and hand tools should not be used where flammable vapours e.g. brake cleaner or fuel, are present

**E. FIRE PRECAUTIONS**

1. All competition and service vehicles should carry a suitable fire extinguisher.
2. Special consideration should be made before lighting any cooking appliance.
3. All sources of ignition should be kept away from any fuel store or re-fuelling area.
4. Fire extinguishers should not be moved from their known location, other than when in use.
5. In the event of any fire, a report should be made to the Organisers of the event before leaving the venue.
6. All entrants/competitors are encouraged to train their personnel in correct fire prevention and treatment procedures.

**F. COMPRESSED AIR EQUIPMENT**

1. Air blasts from over inflated tyres can cause severe injury. Tyres should not be inflated above manufacturers' recommendation figures.
2. Always stand clear when inflating tyres.
3. Compressors & air lines should be inspected regularly.
4. Compressed air cylinders should be stored and used to suppliers' recommendations

**G. NOISE**

1. Exposure to excessive noise may result in hearing loss, or other complaints. These may be short term, or after prolonged exposure, permanent.
2. Where exposure to noise is unavoidable, hearing protection should be worn

**H. MANUAL HANDLING**

1. Lifting, carrying and propelling of loads by bodily force is a major cause of industrial injuries. All entrants are encouraged to train their personnel in safe manual handling techniques and provide appropriate lifting aids.

**I. WASTE**

1. Entrants must remove all waste from the venue, including containers, packaging, tyres, oils etc. They must be disposed of it in accordance with environmental legislation.

**J. VEHICLE SAFETY**

1. A 10mph speed limit should be observed at all times in a Service Area, other than for Emergency Vehicles which may be attending an incident.
2. There may be pedestrians in Service Areas. Special care must be taken in these circumstances, to avoid collisions.
3. The use of mopeds, motorcycles, scooters, go-peds, quads etc. is forbidden in Service Areas.
4. Vehicles may only be driven by persons holding valid driving licences for that class of vehicle.

K. FIRST AID

1. Any person sustaining injury or illness, should seek treatment from the event emergency services, by initially reporting to Rally HQ, who will ensure the appropriate response

L. REPORTING OF ACCIDENTS & INCIDENTS

1. All accidents where any person sustains injury, or where damage to property occurs, should be reported immediately to Rally HQ.

M. FURTHER REGULATIONS & INFORMATION

1. Entrants/Competitors are reminded of their obligations to comply with the requirements of the appropriate sporting regulations at all times. These Guidance Notes should be read in conjunction with all relevant regulations and the HSE's guide HSG112 'Managing Health & Safety at Motorsport Events'.