

PITSTOP GARAGE

#TEAMPITSTOP
PENGAM NP12 3AA TEL: 01443 835905



FORRESTER'S CAR CLUB



DIXIES CHALLENGE

SUNDAY 4TH MAY 2025

FINAL INSTRUCTIONS



supported by



www.dixieschallenge.com



FINAL INSTRUCTIONS

Start No: See Seeded Entry List

Your Time at MTC1: See Noticeboard on Sportity

Thank you for your entry for the 2025 Dixies Challenge. Please read through these instructions thoroughly. You are reminded that this document carries the same force as the Supplementary Regulations. If you have any queries, do not hesitate to contact the organising team.

If for any reason, you find yourself unable to attend the event, please let us know ASAP as we have a reserve list who would gladly take your entry.

Your ACTUAL due time at MTC/ATC 1 will be found on the Start Time List on the Official Notice Board, available Saturday evening.

The noticeboard will be on the Sportity app, available at the App Store and on Google Play.

Documentation and signing on is being done online. **If you have not completed this already, please do so by 30th April 2025 (Close of Entries Date).**

Emergency Contacts Numbers:

Neil Fuller [Event Secretary]

07798 868865 (Saturday 3rd 09:00-21:00, Sunday 4th from 07:00hrs)

Karen Jaggard [Entries Secretary]

07731 317000 (Saturday 3rd 12:00-21:00, Sunday 4th from 07:00hrs)



1 AMENDMENTS TO REGULATIONS

Article 21.1 - Officials

Change: Radio Communications: Kevin Hughes to Chris Evans

Change: Motorsport UK Safety Delegate: TBC to Vic Fancy

2 IMPORTANT REMINDERS

We kindly remind you that:

- **Per 11.1 of the regulations, please ensure your entry form is fully completed and you have uploaded the front and rear of your licenses and club cards by the final closing of entries date, 30th April 2025.**
- **The use of motorhomes, trailers and service vehicles larger than a long wheelbase van are prohibited. This is not open for discussion.**
- Landmarc have notified us that the Defence Training Estate is tobacco free from 1 January 2023. Whilst the national guidance allowed for use of a vaping designated area, we have been informed that Epynt does not have one. As a result, smoking and vaping is prohibited on the entire venue. Penalty for non-compliance is outlined in the Supplementary Regulations Article 16.11.
- We are using Sporttraxx on this event. Instructions for fitting and operation are attached to these instructions - Please read them carefully. Trackers will be provided for fitting at scrutineering. Failure to return the equipment at the end of the event will result in the driver being invoiced for its replacement. Sporttraxx can be contacted on the event through Craig Parry on 07977 234790
- Only one service vehicle should enter the service area in addition to the competing vehicle due to space limitations. Please leave additional cars in the trailer park or Dixies Car Park. A printable pass will be provided via Sportity. Please **do not** park on the through road through the service area as this must be always kept clear.
- Competitors must supply an environmental ground sheet, which must be placed under the competing vehicle during any service activities.
- You should ensure that all documentation (V5, MOT, Competition licenses, Clubcards etc) are brought to the event and available for inspection if required. All vehicles must be taxed, insured and have a logbook or passport.
- All competing crews must attend a compulsory Drivers Briefing which will be held outside Rally HQ at 09:00hrs on Sunday 4th May 2025.
- If you happen to breakdown, please stay with your vehicle. We will endeavour to retrieve both you and your vehicle as soon as practicable. We would strongly suggest that you carry drinking water and a coat in your car. Take care where you stand, the ground can be uneven.
- Alcohol consumption/possession within the venue is prohibited by the MOD Licence.
- The 'Warming of brakes' and the 'warming of tyres' within the confines of the service area is prohibited. Penalty as per event regulations.
- To comply with the new regulations, you need to provide to us at the end of the event a list of tyres used. The form you need to complete is contained in your Timecards.

3 SCRUTINEERING AND PAPERWORK COLLECTION

Scrutineering for all competitors, unless the Sunday premium was selected on your entry form, will take place on Saturday 3rd May from 14:00-18:00 at Fedw Equestrian Centre, Llywel. LD3 8RG. See the enclosed map for more details. **You must not take your trailer to scrutineering**, and instead unload in the trailer park 1.4 miles onto the ranges – What3Words: ///resonates.horizons.apparatus). Marshals may be controlling access to the scrutineering venue so please follow their instructions.

You will be provided with your decals and numbers at Noise – please ensure they are fitted before presenting your car at scrutineering. After scrutineering, take your process card to the paperwork collection point at the same venue to collect your necessary paperwork including your Roadbook.

There will be an on-site café open all day which we would encourage you to use for refreshments.

For competitor numbers listed below who have arranged to scrutineer on Sunday morning between 07:30-08:30, this will take place near Dixies Corner at the top of the Steps. What3Words: ///cave.against.awestruck. You will be provided with your decals and numbers at Noise – please ensure they are fitted before presenting your car at scrutineering. After scrutineering, take your process card to the paperwork collection point which will be in Rally HQ in the service area to collect your necessary paperwork including your Roadbook.

On both days, Trackers will be provided at scrutineering and need fitting in line with Sporttraxx instructions. They must be returned at the end of the event or on retirement.

Car No	Day	Car No	Day	Car No	Day	Car No	Day
1	Saturday	21	Saturday	41	Saturday	61	Saturday
2	Saturday	22	Saturday	42	Saturday	62	Saturday
3	Saturday	23	Saturday	43	Saturday	63	Saturday
4	Saturday	24	Sunday	44	Saturday	64	Saturday
5	Saturday	25	Saturday	45	Saturday	65	Saturday
6	Saturday	26	Saturday	46	Saturday	66	Saturday
7	Saturday	27	Saturday	47	Saturday	67	Saturday
8	Saturday	28	Saturday	48	Saturday	68	Saturday
9	Saturday	29	Saturday	49	Saturday	69	Saturday
10	Saturday	30	Saturday	50	Saturday	70	Saturday

11	Saturday	31	Saturday	51	Saturday	71	Saturday
12	Saturday	32	Sunday	52	Saturday	72	Saturday
13	Saturday	33	Saturday	53	Saturday	73	Saturday
14	Saturday	34	Sunday	54	Saturday	74	Saturday
15	Saturday	35	Saturday	55	Saturday	75	Saturday
16	Saturday	36	Sunday	56	Saturday	76	Saturday
17	Saturday	37	Sunday	57	Saturday	77	Saturday
18	Sunday	38	Saturday	58	Saturday	78	Saturday
19	Saturday	39	Saturday	59	Sunday	79	Saturday
20	Saturday	40	Saturday	60	Saturday	80	Saturday

4 ENTRANCE TO THE VENUE, TRAILER PARK AND SERVICING

The trailer park will be signposted and is in the gravel car parks on the left hand side of the road (travelling Northbound) approximately 1.4 miles from the top of the dual carriageway at Llywel. Neither the event organisers nor the MOD will accept responsibility for trailers left in the trailer park.

Any additional vehicles must also be left here (or at Dixies Corner) and should not be brought to the service area.

The MoD have asked us to ensure that there is no camping on the Ranges, and hence you must not access the ranges until Sunday Morning from 4am. Overnight camping will be available at the scrutineering venue if desired. Please **notify** Paul Loveridge in advance to secure a place on 07831 656472.

The bar at Fedw Farm will be open from 5pm until 11pm and evening food will be available as well. We would greatly encourage you to use the facilities provided by the farm.

There are three sections within the service area, all on the left hand side of the road as you travel Northbound from the Trailer Park (approximately 4.7 miles along the road). Servicing is prohibited in the section on the right, over the cattle grids, at the request of the MOD.

There will not be a huge amount of room in the service area, so please park sensibly and considerately for your fellow competitors.

The whole of the service area has been designated as a refuel zone. Competitors are permitted to refuel in the following manner:

- With fuel from your own cans/drums in the service area. Re-fuelling must be by hand pumping, rather than from hand held containers. If fuel is dispensed from hand held containers a suitable spout for pouring must be used. **Open pouring from hand held containers with or without the use of a funnel is not permitted.** The vehicle must be

unoccupied e.g. All personnel must be outside the car and the engine switched off.
(Annex P Motorsport UK SRSRs)

JD Tyres will be attending the event. Please contact them on 07968 020545 or 07966 466548 if you have any specific requirements.

5 EVENT FORMAT

The format of the event is detailed in your roadbook, available on Sportity. Stages 3 & 4 are a repeat of Stages 1 & 2 and Stages 7 & 8 are a repeat of Stages 5 & 6.

At all times, if queueing for a stage, please **park on the left hand side** and leave room for access. Please do everything you can to ensure the middle road remains unobstructed and that any public using this road are not inconvenienced. This is particularly important for SS9 and SS10.

The Competitor Liaison Officer will be based at or around the outside of Rally HQ and the main service area all day and should be your first point of call for all queries.

6 ORGANISERS ADVICE

No water or fuel is available on site - you should bring enough for you and your vehicle for the day.

Food will be available from a catering van located in the main service area.

Please treat the chicanes with respect to avoid damaging them, your vehicle and putting marshals at danger.

7 RESULTS AND AWARDS

You can view live timing results using this link <https://amcrallyresults.live/livetiming/event/1001213>. Awards will be presented in person, outside of Rally HQ, as soon as possible after the event.

8 ACKNOWLEDGEMENTS

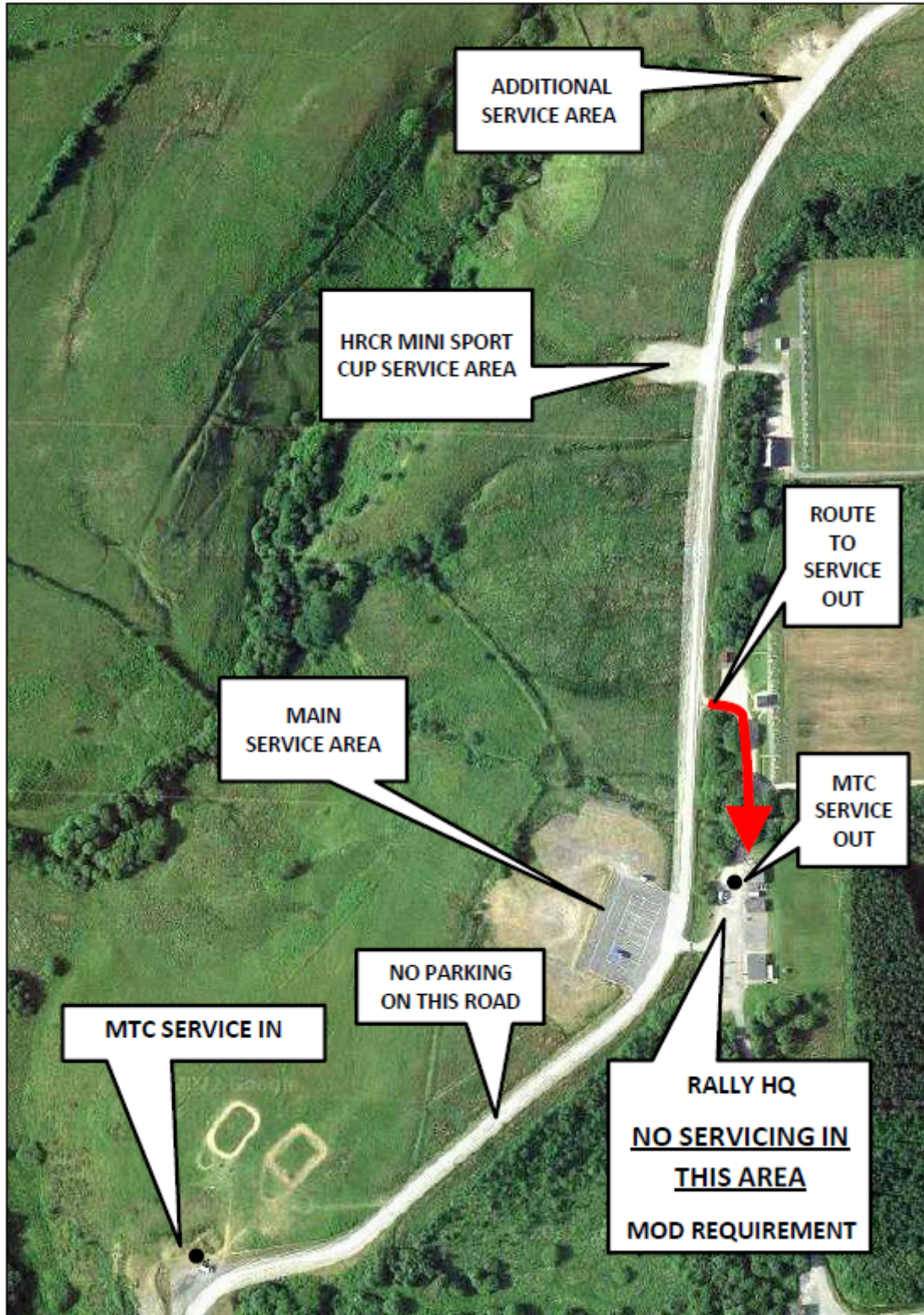
Ministry of Defence	Defence Infrastructure Organisation	Epynt Graziers
Major Andy Butcher	Landmarc staff	The Residents of Tirabad and Llywel
Motorsport UK	Mr Dorian Evans	All Volunteers
Mr Chris Phillips	Dyfed Powys Constabulary	Powys County Council

We thank you again for your entry, and welcome you back to Epynt. If you have any constructive feedback before, during or after the event, we would very much like to hear it to see what we can improve next year.

See you at the weekend,

Kelvyn Davies, Clerk of the Course
27th April 2025

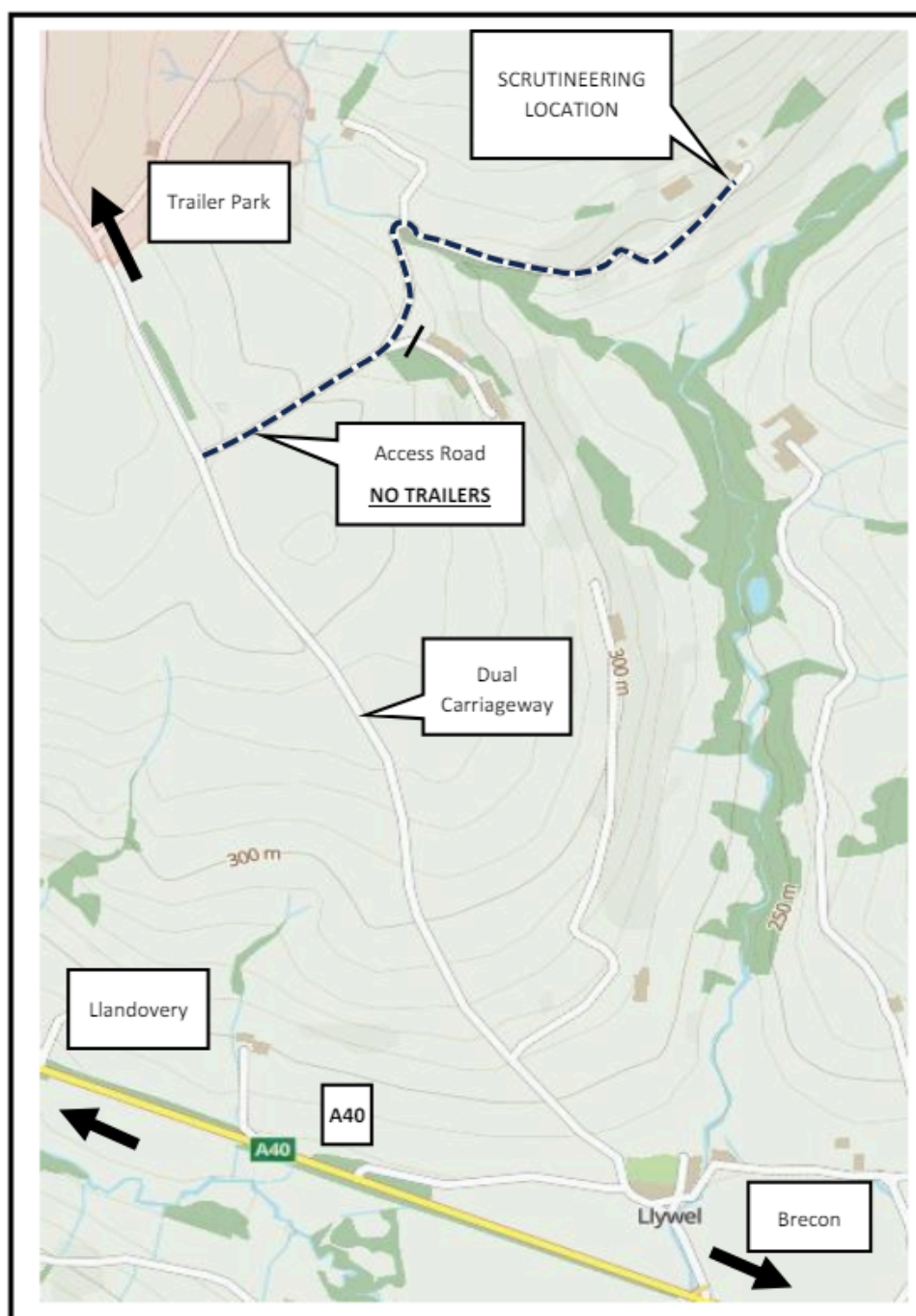
SERVICE AREA – J RANGE

WHAT 3 WORDS LOCATION: [///maybe.goat.dissolves](http://maybe.goat.dissolves)

SCRUTINEERING & NOISE TEST**SATURDAY ONLY**

This will take place at Fedw (W3W: [///willpower.powers.rephrase](https://www.willpower.powers.rephrase)) Right off the dual carriageway leading up from the A40 towards Epynt, in 1 mile turn right towards Scrutineering.

IMPORTANT: YOU MUST NOT TAKE YOUR TRAILER TO SCRUTINEERING. YOU MUST UNLOAD YOUR CAR IN THE TRAILER PARK (W3W: [///resonates.horizons.apparatus](https://www.resonates.horizons.apparatus)), WHICH IS LOCATED ABOUT 1.4 MILES FURTHER TOWARDS THE RANGES. THEN DRIVE YOUR CAR BACK TO SCRUTINEERING. ACCESS IS NARROW TO SCRUTINEERING AND WILL BE CONTROLLED BY MARSHALS. IF YOU ATTEMPT TO TAKE YOUR TRAILER TO SCRUTINEERING YOU WILL BE STOPPED.



SERVICE AREA GUIDELINES

When participating in motor sport events and carrying out activities at Service Areas, entrants, competitors and service crew members should be aware of their own and other people's safety and wellbeing. The Organisers have allocated a service area of adequate size for the maximum number of entrants and taken all reasonable precautions to ensure these zones are suitable for anticipated service activities and the needs for entrants, competitors and service crew members.

A. GENERAL GUIDANCE

1. The service area zones provided offer relatively even ground, avoid setting up on uneven ground.
2. The Organisers have set a speed limited for the Service Area of 10mph, please adhere to this.
3. Ensure an environmental ground-sheet is in place before work commences.
4. If you erect awnings, pop-up tents or gazebos, please ensure they are securely constructed with sufficient ballast or anchorage to cope with wind conditions. If the Organisers deem any structures to be unsafe, you will be required to rectify or remove the structure.
5. Service vehicles should have an environmental spill-kit available and ready for use.
6. Fire extinguishers should be readily available at all time, particularly when welding, grinding or handling fuel or any part of the fuel system. The Organisers have provided fire extinguishers for use as necessary at the top of the service area at the black gate near results.
7. Please ensure you do not block for emergency vehicles at any time.
8. Vehicles should be supported by axle stands, chassis sill stands or ramps, all with recommended base plates, when raised in the air by trolley or any other types of jack. Engines should not be running when the vehicle is raised on stands. No other work on the car should be attempted, when raising or lowering of the car is taking place.
9. Where necessary, as part of the service i.e. changing of fuel tank, fuel pump, fuel filter, or any other item of fuel circuit, emptying and/or refilling of the fuel tank is permitted provided that:
 - a. The work is carried out with the knowledge of the organiser
 - b. A fire extinguisher with operator is on standby
 - c. No other work is carried out on the car during this operation
 - d. A safety zone is established within which all sources of ignition are removed
 - e. A minimum amount of fuel is used and any removed fuel is stored in a sealed container
10. Any personnel carrying out work should ensure that they adopt safe working practices at all times. Entrants/Competitors are responsible for all personnel in their team and in particular for supervising any young persons under the age of 18.
11. Trailing cables & hoses should not be allowed to create a trip hazard and should not be run across access or roadways unless covered by cable protectors
12. Whenever vehicle engines are being run, adequate ventilation must be in place.

B. STORAGE & USE OF PETROLEUM SPIRIT

1. Re-fuelling should be the last operation to be carried out before the vehicles leave. The vehicle should be off any support stands, have all four wheels on the ground, have all other work ceased and have no occupants, when refuelling commences. All sources of ignition must be removed from the area and an appropriate fire response should be prepared.
2. Ideally re-fuelling should be by hand pumping, rather than from hand held containers
3. Containers should comply with the relevant British Standard, should be marked "Petroleum Spirit-Highly Flammable" and be kept from any source of ignition.
4. Petrol is to be used as fuel only, not for any other purpose.
5. All vehicle re-fuelling is to take place in the open air. Smoking and any other sources of ignition, including live electrical items, must be prohibited and a safe area should be enforced with an operative on standby with a fire extinguisher.

6. Refuelling operatives, including those standing by with fire extinguishers, should ensure they are wearing protective clothing, including gloves and eye protection.

C. HAZARDOUS SUBSTANCES

1. Some parts on historic vehicles, for example brake & clutch linings, contain asbestos. Competitors are encouraged to use non-asbestos substitutes where possible.
2. Where asbestos is used, every effort should be made to prevent dust being released.
3. Some mineral oils may cause skin cancers. Where contact does occur, contamination should be washed off immediately. The wearing of any contaminated clothing should be avoided.
4. Other substances may cause ill health. Competitors should obtain MSDS (material safety data sheets) from suppliers in advance so that they hold important safety information about the products

D. ELECTRICAL SAFETY

1. All electrical equipment should be maintained in a safe condition.
2. Extension leads & cables should be neoprene, oil resistant flexible cable.
3. All electrical equipment used externally should be weatherproof and tools should be insulated against electric shock and used with residual current devices.
4. Electrical equipment and hand tools should not be used where flammable vapours e.g. brake cleaner or fuel, are present

E. FIRE PRECAUTIONS

1. All competition and service vehicles should carry a suitable fire extinguisher.
2. Special consideration should be made before lighting any cooking appliance.
3. All sources of ignition should be kept away from any fuel store or re-fuelling area.
4. Fire extinguishers should not be moved from their known location, other than when in use.
5. In the event of any fire, a report should be made to the Organisers of the event before leaving the venue.
6. All entrants/competitors are encouraged to train their personnel in correct fire prevention and treatment procedures.

F. COMPRESSED AIR EQUIPMENT

1. Air blasts from over inflated tyres can cause severe injury. Tyres should not be inflated above manufacturers' recommendation figures.
2. Always stand clear when inflating tyres.
3. Compressors & air lines should be inspected regularly.
4. Compressed air cylinders should be stored and used to suppliers' recommendations

G. NOISE

1. Exposure to excessive noise may result in hearing loss, or other complaints. These may be short term, or after prolonged exposure, permanent.
2. Where exposure to noise is unavoidable, hearing protection should be worn

H. MANUAL HANDLING

1. Lifting, carrying and propelling of loads by bodily force is a major cause of industrial injuries. All entrants are encouraged to train their personnel in safe manual handling techniques and provide appropriate lifting aids.

I. WASTE

1. Entrants must remove all waste from the venue, including containers, packaging, tyres, oils etc. They must be disposed of it in accordance with environmental legislation.

J. VEHICLE SAFETY

1. A 10mph speed limit should be observed at all times in a Service Area, other than for Emergency Vehicles which may be attending an incident.
2. There may be pedestrians in Service Areas. Special care must be taken in these circumstances, to avoid collisions.
3. The use of mopeds, motorcycles, scooters, go-peds, quads etc. is forbidden in Service Areas.
4. Vehicles may only be driven by persons holding valid driving licences for that class of vehicle.

K. FIRST AID

1. Any person sustaining injury or illness, should seek treatment from the event emergency services, by initially reporting to Rally HQ, who will ensure the appropriate response

L. REPORTING OF ACCIDENTS & INCIDENTS

1. All accidents where any person sustains injury, or where damage to property occurs, should be reported immediately to Rally HQ.

M. FURTHER REGULATIONS & INFORMATION

1. Entrants/Competitors are reminded of their obligations to comply with the requirements of the appropriate sporting regulations at all times. These Guidance Notes should be read in conjunction with all relevant regulations and the HSE's guide HSG112 'Managing Health & Safety at Motorsport Events'.

The new Sporttraxx Rally 2G/4G Tracker with external Keyboard

The best Sporttraxx Tracker ever

Easier installation :

- Fully battery operated for up to 5 days
- No power cables needed
- No holes drilled in the roof thanks to internal antennas
- Tracker is fitted to windscreen with nanogel
- Keyboard is fitted with nanogel, or cableties or screws
- Smallest size and weight
- Maximum flexibility in positioning the Keyboard for an



Easier compliance with the basic FIA safety requirements:

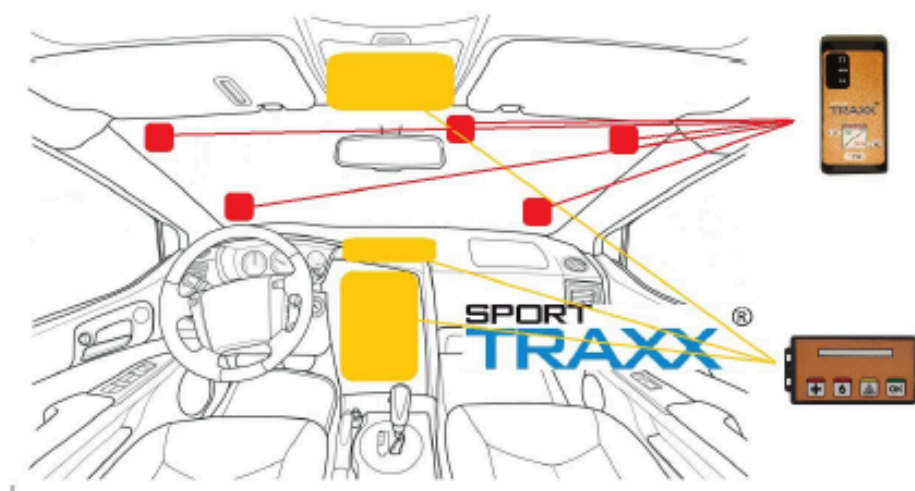
- SOS Med/SOS Fire/Hazard/OK buttons are easily reachable by both members of the crew even in a rolled over car, with fastened seat belts
- Full visibility of RED Flag notifications, and its easy acknowledgement by both members of the crew

Extended GSM coverage

- Access to both 2G (GPRS) and 4G (LTE-M) networks
- Multiroaming SIM Cards connecting to EE, Vodafone, O2, 3, EIR networks
- New watchdogs for better and faster reconnections in difficult areas

Higher GPS resolution

- Up to 1 position per second when car is moving, typically 5 seconds for battery saving purposes
- Improved internal buffer



Installation procedure

The tracking set is made of 3 parts:

1. The USB-C Cable
2. The Tracker
3. The Keyboard

Collect Cable and Keyboard at administrative checks.

Install the Keyboard according to the suggested positions using nanogel or cable ties.
Connect the Cable (straight connector) to the Keyboard and position it in order to reach the suggested positions on the windscreen.
You can purchase the cable and keep it in the car for the next rally that will use the Sporttraxx Trackers with Keyboards. That highly recommended solution makes it easier the next time.

At scrutineering, Sporttraxx will check the correct installation, fit the Tracker on the windscreen using nanogel, connect the 90° connector and will start the Tracker. Sporttraxx will reject an installation which does not comply with the FIA prescriptions.

At the end of the rally, remove both Tracker and Keyboard and return them to Sporttraxx team with the cable (if not purchased) at the finish. In case of early withdrawal from the rally, make sure to return them to Race Control or a Sporttraxx technician.

If you purchased the cable, keep that in position for next use.




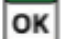
The Tracker is always fitted to the windscreen using nanogel. To remove it, do not pull it, but twist it.

Best fitting place for the Keyboard is on the upper rollcage, using nanogel or cableties.
The keyboard can also be fitted on the top of the dashboard or on its front side, as long as the surface is allowing the use of nanogel. Alternatively you can use screws but it makes it more difficult to remove at the end of the event.

Not returning the Tracker and/or the Keyboard will lead to a charge of 250 and 200 euro each.

How to use it

The Tracker will be delivered/installed and turned ON by Sporttraxx technicians.
You are not allowed to switch OFF the tracking device during the whole duration of the rally.

- If a Medical Intervention is required, press the  button till you hear the Beep
- When a Fire is reported, press the  button till you hear the Beep
- To inform Race Control about a Hazard situation or a Road Block, press the  button
- To confirm to Race Control that you are fine, after your stop, press the  button



The green led bar confirms the reception of any of your transmissions
It also means a "call back" request when on Road Sections. Reset it by pressing OK



The red flashing led bar (+ buzzer) means RED FLAG. Press the OK button to quit the warning and acknowledge its reception. React accordingly